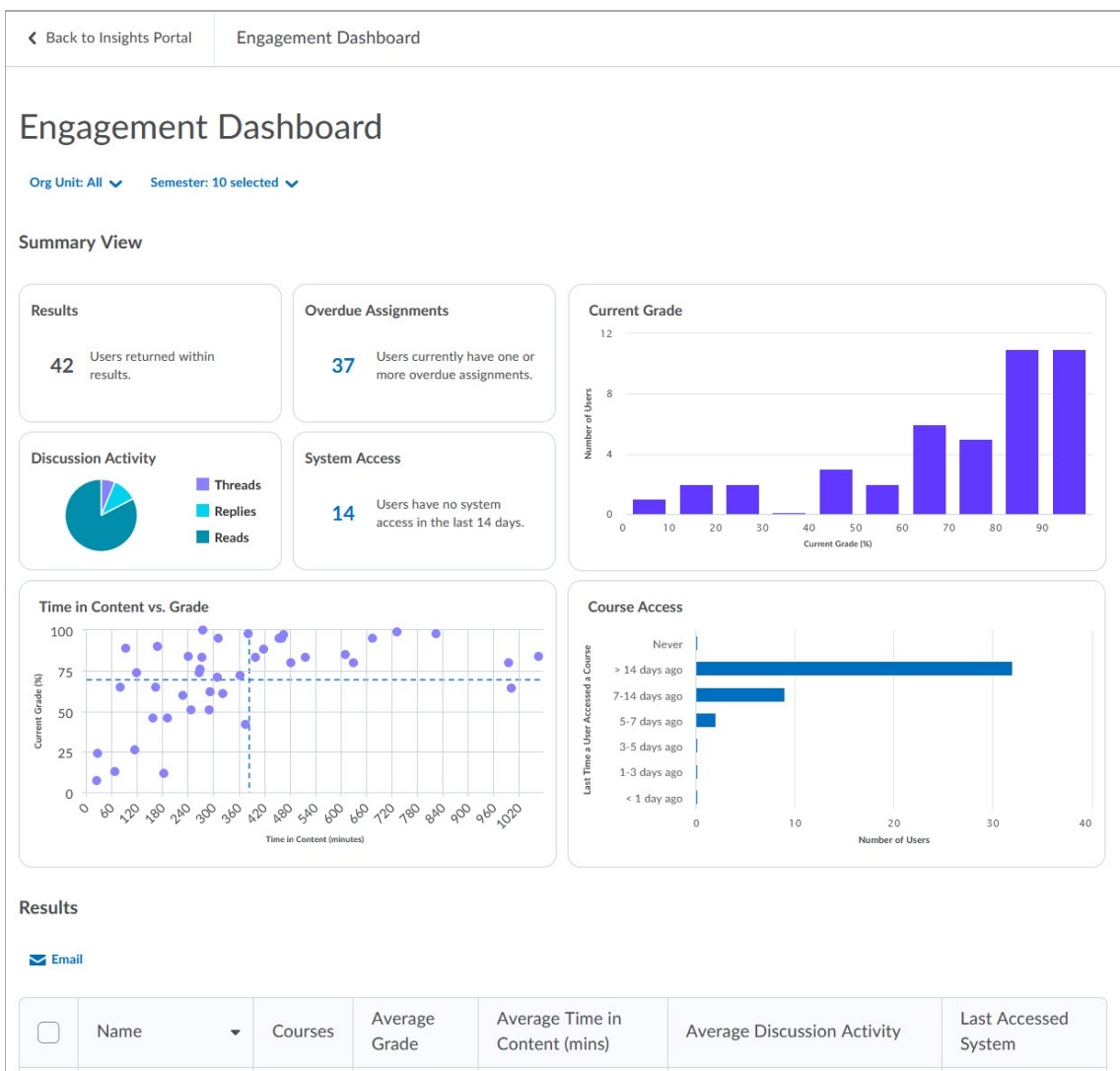


Insights Portal - Engagement Dashboard

Last Modified on 04/06/2026 3:57 pm CDT

The **Engagement Dashboard** contains visualizations that provide insight into how students are engaging with their courses. The goal of this dashboard is to help instructors to identify at-risk students so that they can intervene and get them back on track. The information provided in the dashboard allows for individualized improvement suggestions by providing context and a holistic view of the student. By filtering out irrelevant data and combining metrics by filtering on cards, faculty can focus on their own definition of an at-risk student.

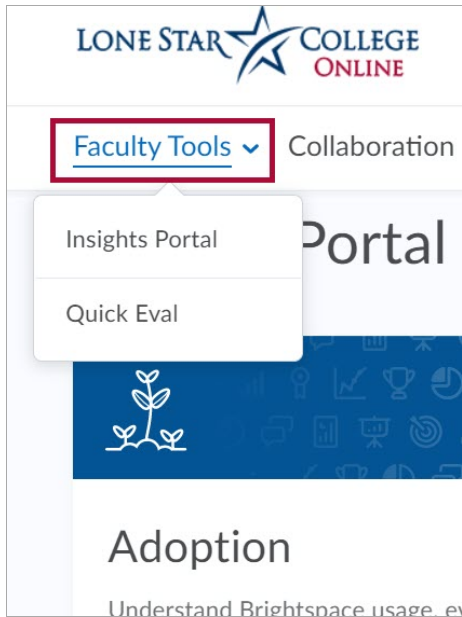


For a deeper look and a definition of statistical terms, such as Reliability Coefficient, Correlation, Discrimination Index, Top Lure, etc. visit [Using the Engagement Dashboard \(https://community.d2l.com/brightspace/kb/articles/4545-engagement-dashboard\)](https://community.d2l.com/brightspace/kb/articles/4545-engagement-dashboard)

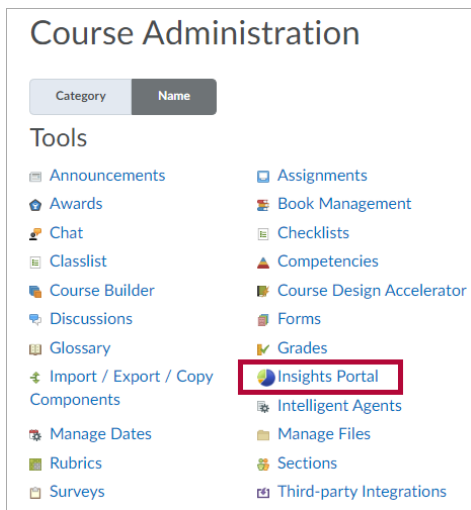
Access Insights Portal

There are two different paths to the **Insights Portal**:

1. From the D2L homepage, click **[Faculty Tools]** → **[Insights Portal]**.

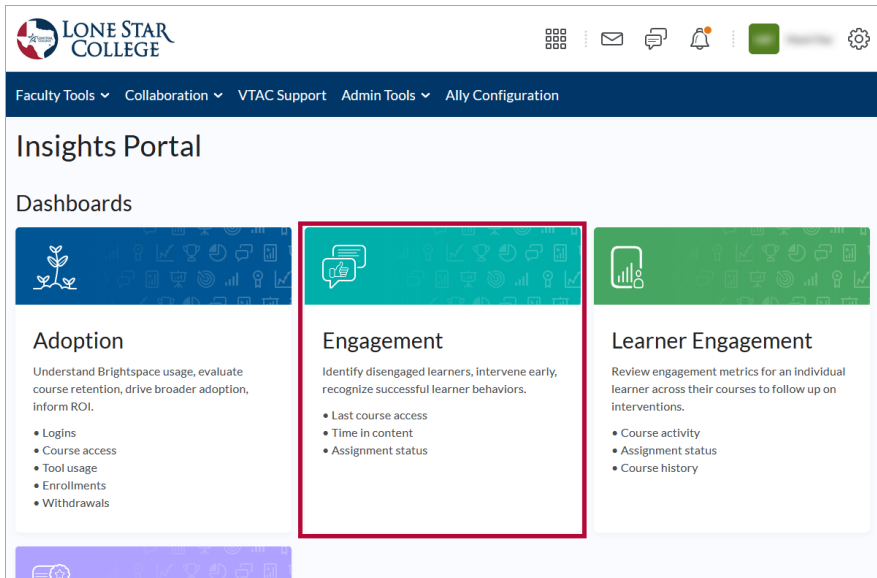


2. From within a course, click **[Course Management]** → **[Course Admin]** → **[Insights Portal]**.



Access the Engagement Dashboard

1. Once you have accessed the **Insights Portal**, click **[Engagement]**.



Exporting the Data

You can export the data as an Excel file, Comma Separated Values file, or a PowerPoint file.

- Click on the export icon in the upper right just above the chart.

No. of Questions	Reliability Coefficient
5	0.07
50	0.83

- Click on the file type you want.

