

Publish a Quiz or Question Library from Respondus to D2L

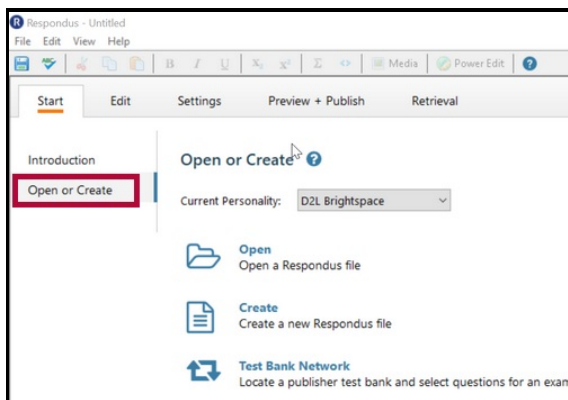
Last Modified on 06/22/2022 11:50 am CDT

Respondus allows a quiz or question library to be published to a D2L course or courses.

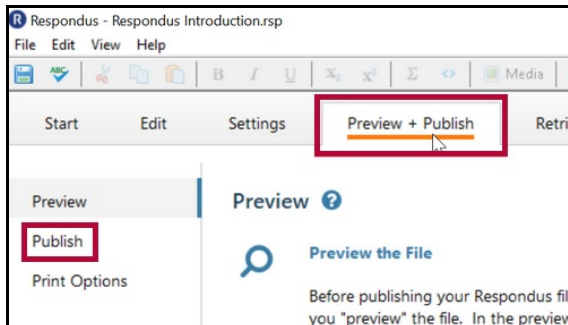
If you have not installed Respondus 4.0, see [Installing or Updating Respondus 4.0 & StudyMate Author](https://vtac.lonestar.edu/help/a187) (<https://vtac.lonestar.edu/help/a187>).

Publishing a Quiz or Question Library to D2L

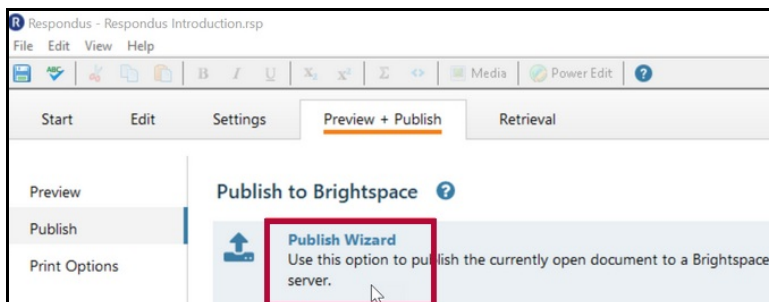
1. In Respondus, **Open** or **Create** the quiz or question library.



2. Select the **Preview & Publish** tab. From the menu on the left, click the **Publish** option.



3. Click the **Publish Wizard** button.



4. From the Publish Wizard window, select an option for type of publish. The most common option is Publish to a single course.


Publish Wizard

1. Type of Publish

- Publish to single course
- Batch Publish to multiple courses
- Export QTI XML for manual upload to Brightspace

5. Select the server you have previously configured.

2. Choose an existing server, or "add new server" to add settings information for a new server

Brightspace Server: D2L [PSS] 

Settings:

Server: d2l.jonestar.edu
 Auth Type: SOAP
 Port: 443
 HTTPS: Yes
 User:

Edit Settings

3. Press [Next] to connect to server

NOTE: If there is no server created yet, follow steps A-D. Otherwise, skip this section.

A. Select **-add new server-** from the dropdown menu.

2. Choose an existing server, or "add new server" to add settings information for a new server

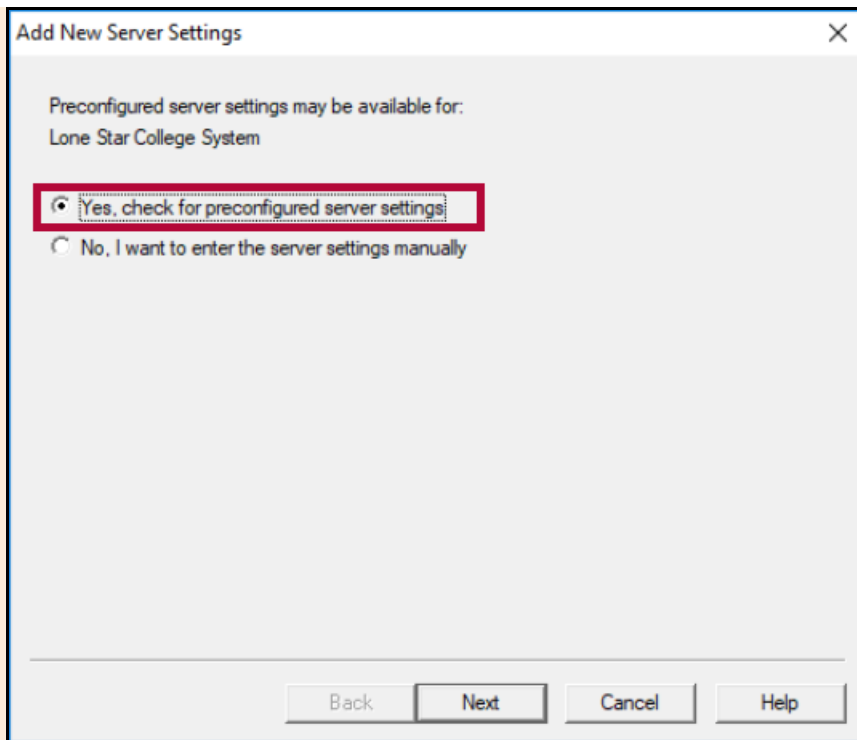
Brightspace Server: - add new server - 

Settings:

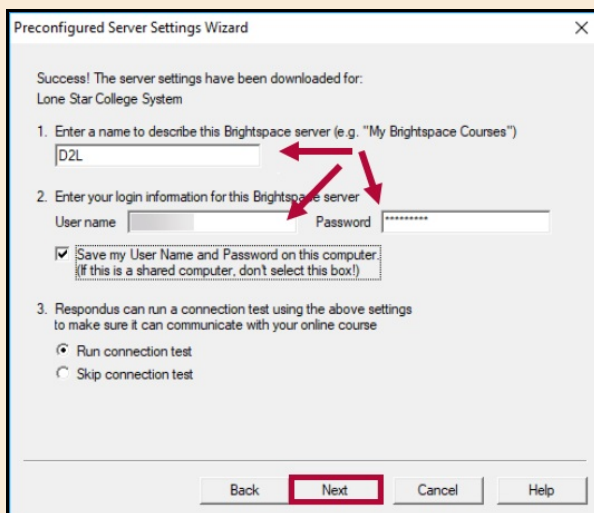
Choose "add new server" or an existing server above

Edit Settings

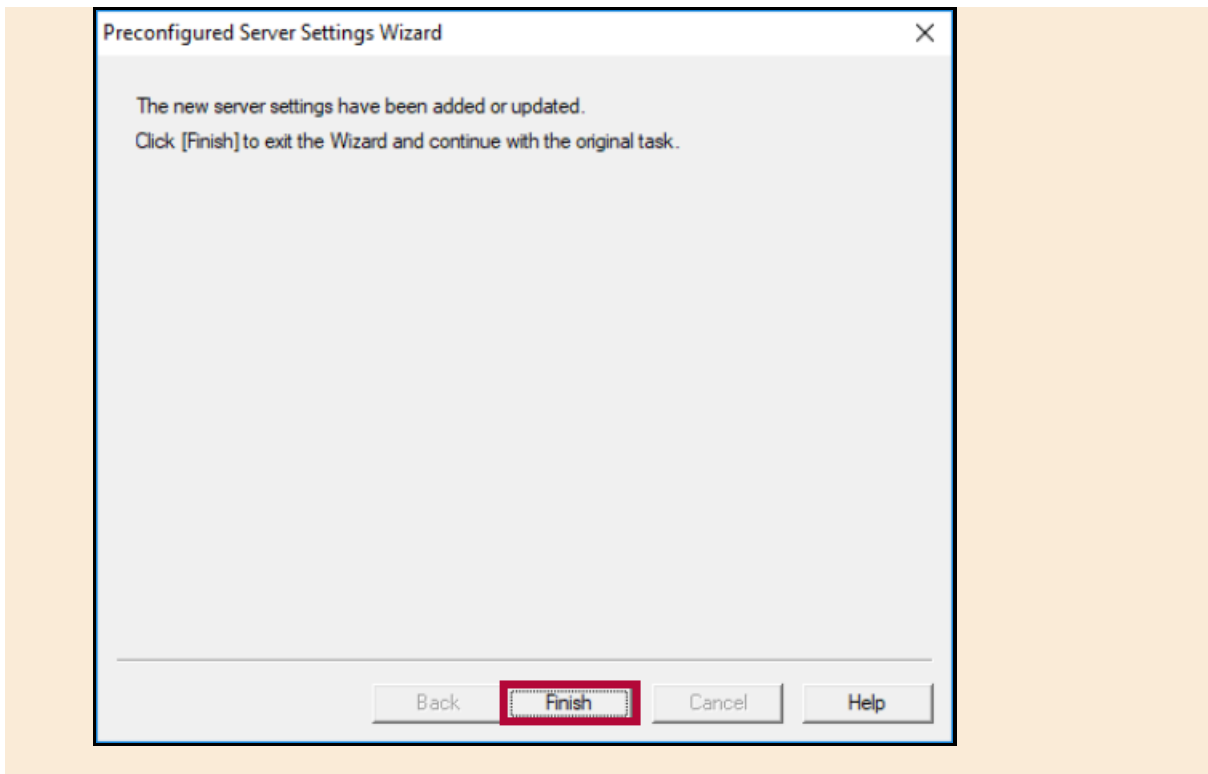
B. Respondus may be preconfigured to connect to D2L. Select "Yes, check for preconfigured server settings." Click **Next**.



- C. Enter a name for the server, your LSC system username, and your Respondus password. See [Installing or Updating Respondus 4.0 & StudyMate Author \(https://vtac.lonestar.edu/help/a187\)](https://vtac.lonestar.edu/help/a187) if you do not have the Respondus/D2L password. If Respondus is installed on your computer, and not used by others, you may check "Save my User Name and Password." Choose whether to Run or Skip the connection test. Click **Next**.



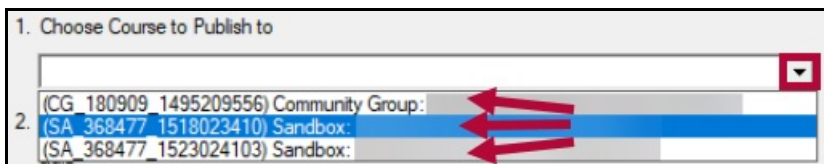
- D. Click **Finish**.



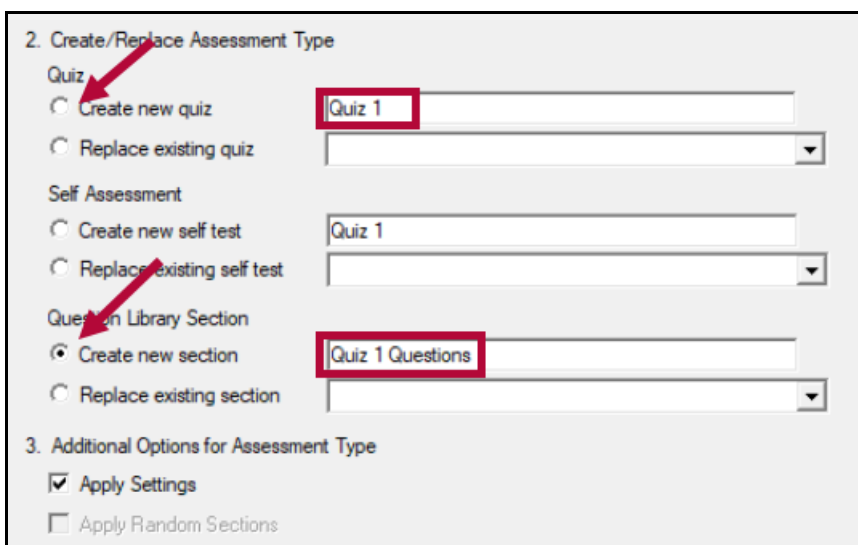
6. Click **Next** to begin the connection to the server.

NOTE: If the connection fails, contact LSC Online through vtac@lonestar.edu () or make an [appointment with a technologist](https://app.acuityscheduling.com/schedule.php?owner=12117659&appointmentType=category:Virtual+Teaching+Assistance+Center) (<https://app.acuityscheduling.com/schedule.php?owner=12117659&appointmentType=category:Virtual+Teaching+Assistance+Center>).

7. Select the course to publish your questions.



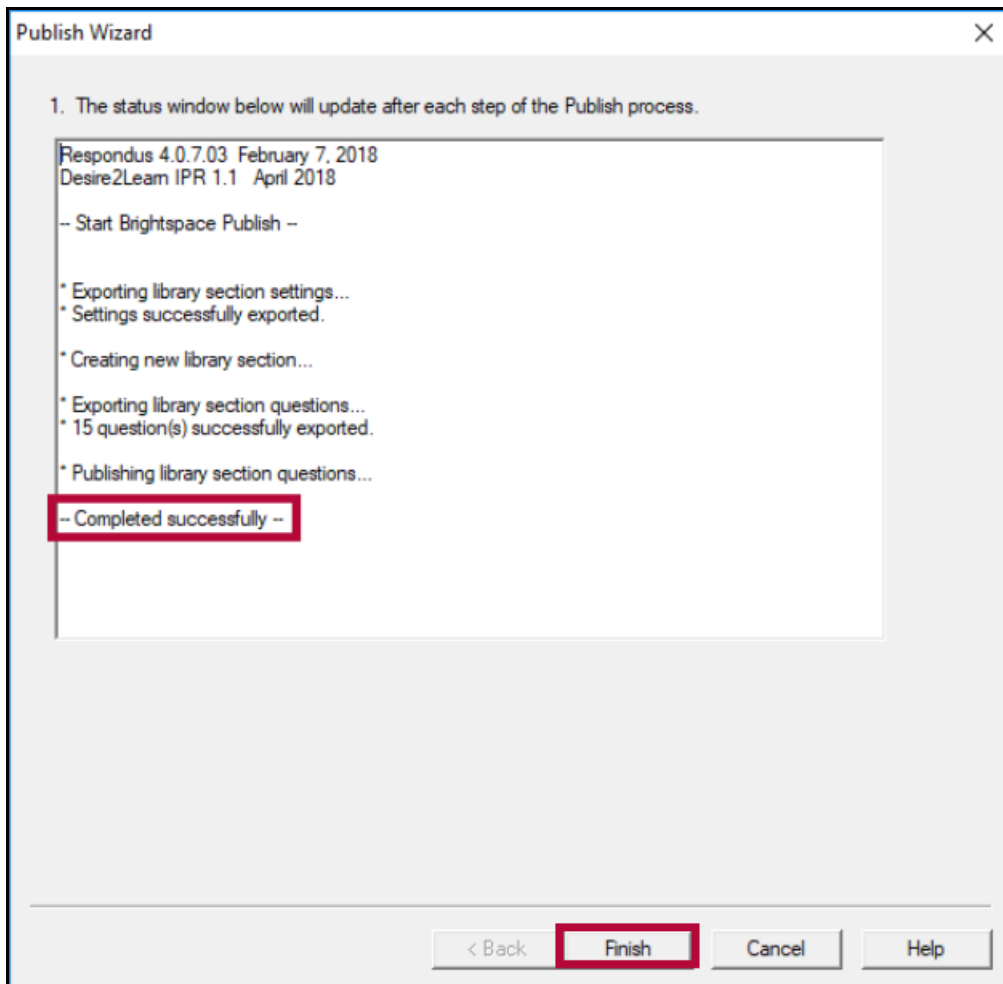
8. Select **Create New Quiz** or **Create New Section** to create a question library.
9. Enter a name for the quiz or question library.



10. Click the **Next** button (not pictured).

NOTE: The publish process will take between 15 seconds to several minutes, depending on several factors: the speed of your connection, the load on the server, the size of the media elements that are being retrieved, and so forth.

You will know that the publish is successful by the statement “**Completed successfully**” that appears in the status box.



11. Click **Finish**.

If you created and uploaded math symbols or equations to Brightspace using Respondus, see [Respondus 4.0 Guides & Videos \(https://vtac.lonestar.edu/help/a192\)](https://vtac.lonestar.edu/help/a192) to download the full Guide for details.