

Respondus 4.0 Installation

Last Modified on 10/03/2023 1:02 pm CDT

Respondus 4.0® is a powerful tool for creating and managing exams that can be printed to paper or published directly to D2L. Exams can be created offline using a familiar Windows environment and then moved to the D2L environment.

NOTE: Respondus 4.0 only runs on Windows operating systems. If you have a Mac, you can usually find Respondus 4.0 on Faculty lab computers.

To Install Respondus 4.0

1. Password Request

Enter your username in the textbox on the page below and a password reset link will be sent to your Lonestar email account.

Set/Reset your D2L Password for Respondus

(<https://d2l.lonestar.edu/d2l/lp/forgotPassword/forgotPassword.d2l>)

NOTE: This is NOT your LSC system-wide password. When you login to most LSC resources, you use LSC authentication. But Respondus 4.0 uses the same **username** (not email, you can find your username in the D2L classlist). Respondus uses a different password that exists only in D2L allowing the software to communicate.

2. Download Respondus 4.0 Installer

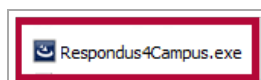
(<https://dyzz9obi78pm5.cloudfront.net/app/image/id/62f2bb7b3563b3064a52f56b/n/respondus4campus-v409-03.exe>)

3. License for Respondus 4.0 (also called the Installation Password)

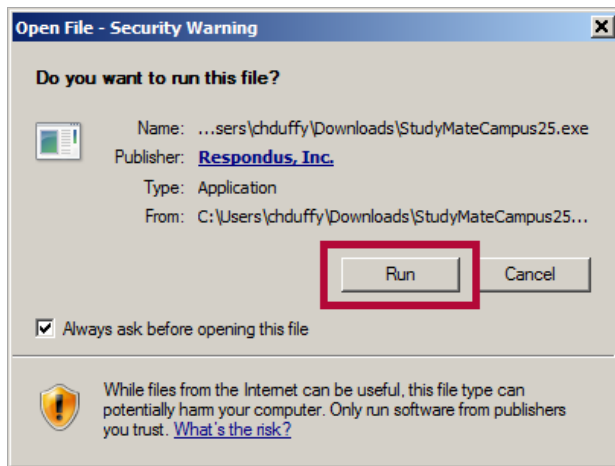
Enter the following into the appropriate fields:

Institution Name:	Lone Star College System
Local Support Contact(s):	Allison Kostrzynski Allison.B.Kostrzynski@lonestar.edu ()
Installation Password:	Y2407I547515524Re5bb5846e6493ef8

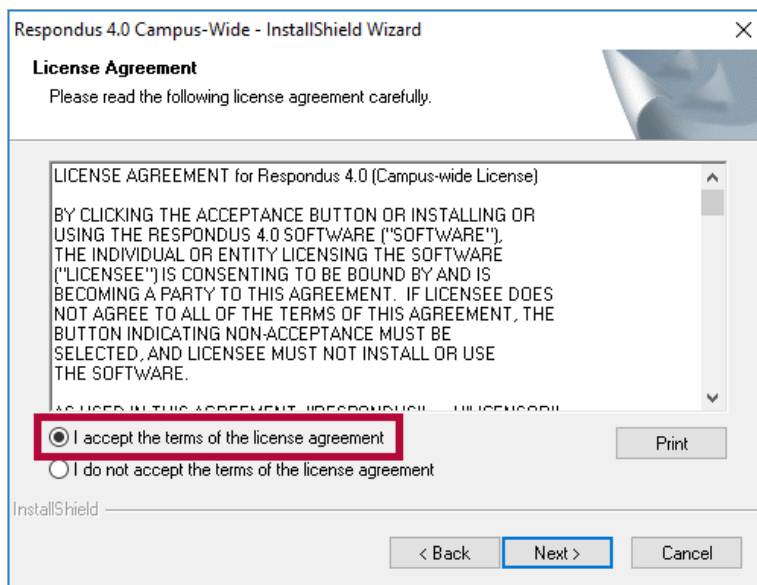
4. Locate the saved file on your computer.



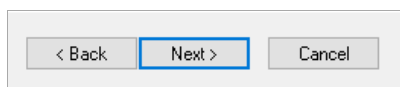
5. Double click on the file. If prompted, choose **Run**. Choose your preferred setup language.



6. Select "**I accept the terms...**" and click **Next**.



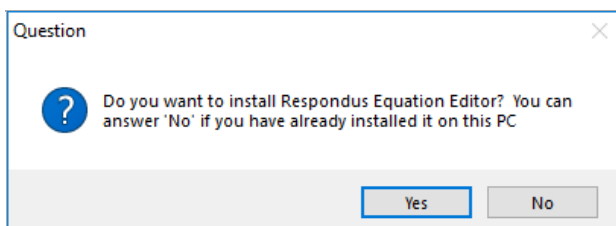
7. On the Destination Location and Projects Folder location prompts, click **Next**. These are default settings. It is best not to change them.



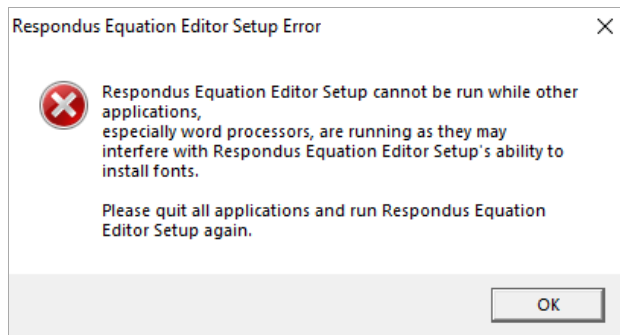
8. Click **Install**.



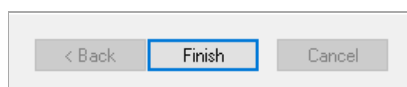
9. Choose if you want to install the Respondus Equation Editor by selecting Yes or No.



- If you see this error message, click **OK** and ignore it unless you plan to create math equations in your tests. In that case contact VTAC for help.



10. Click **Finish**.



11. You will find a shortcut for the program in the Start menu.

